

MULTI POINT THERMOCOUPLE

T-953

Type of T/C	Description
K	Chromal/Alumal
J	Iron/Constantan
N	Nicrosil-Nisil
T	Copper/Constantan
E	Ni-Cr/Constantan
Other	Consult Factory
Ex. :	If Simplex - K Duplex - KK

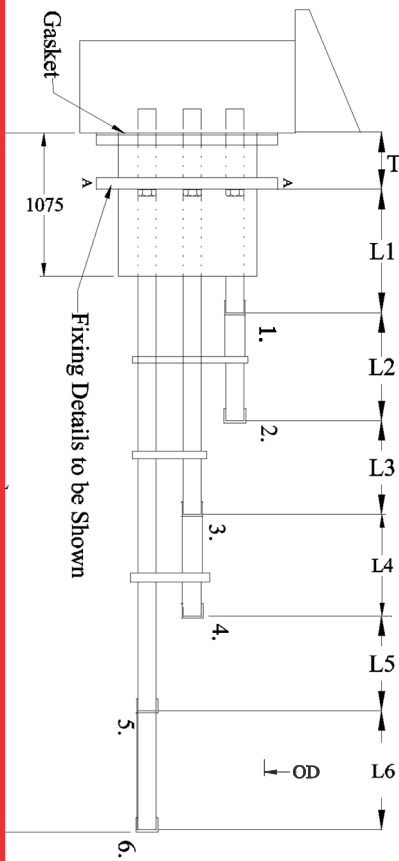
Thermocouple Element
Termination Style
Junction Style
Sheath "OD"
Sheath Material
Length L1
Length L2
Length L3
Length L4
Length L5
Length L6
Length T
**Nominal Length
of T/C "L"**

J	Junction Box
---	--------------

GN	Grounded Rounded Tip
UN	Ungrounded Rounded Tip

1	Ø1mm
1.6	Ø1.6mm
3	Ø3mm
4.5	Ø4.5mm
6	Ø6mm
8	Ø8mm

316	SS 316
310	SS 310
304	SS 304
600	Inconel-600
800	Inconel-800
Other	Consult Factory



Temperature Sensor Technology