

**HIGH RESOLUTION
AFFORDABLE THERMAL
IMAGER**



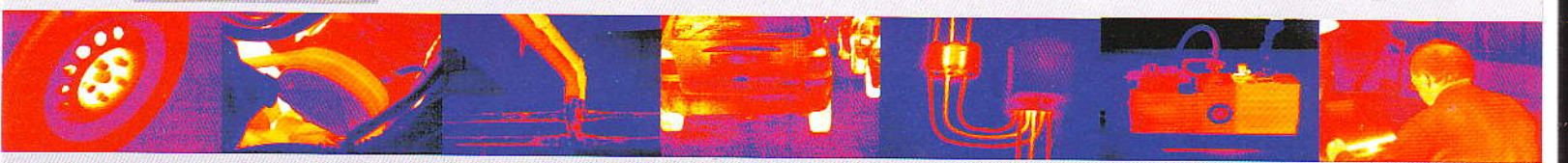
IRI 4010
-10 ... 250°C

... take away the guess work with performance and affordability

The IRI 4010 is an innovative hand held thermal imager which offers outstanding imaging and temperature measurement performance together with the traditional IRISYS features of flexibility, ease of use and minimal cost.

- Only 0.75 kg
- 160 x 120 image
- Simple operation
- Large, clear display
- Multiple temperature measurements
- Lowest cost high definition imager on the market

THERMAL IMAGING



Seeing is believing ...

SPECIFICATION

PERFORMANCE

Field of view (FOV) :	20° x 15°
Focus :	Manual
Minimum Focus :	30cm
Spectral Response :	8µm to 14µm
Thermal Sensitivity :	150mK@25°C scene temperature
Detector :	160x120 pixels uncooled microbolometer

IMAGE STORAGE

Number : Up to 1000 images on SD card supplied
Medium : MMC/SD card

DISPLAY

3½" colour LCD with LED backlight
4 colour palettes

LASER POINTER

A built in Class 2 laser is supplied to highlight the central measurement area

MEASUREMENT

Temperature range :	-10°C to + 250°C
Radiometry :	Two movable temperature measurement cursors Temperature difference measurement
Emissivity Correction :	User selectable 0.2 to 1.0 in steps of 0.01 with reflected ambient temperature compensation
Accuracy :	The greater of ±2% of reading or ± 2°C

IMAGER POWER SUPPLY

Battery :	Lithium-ion field rechargeable, replaceable batteries
Operation time :	4 hours continuous operation
AC operation :	AC adaptor supplied

ENVIRONMENT

Temp. operating range :	-15°C +45°C
Temp. storage range :	-20°C +70°C
Humidity :	10% 90% non condensing

MECHANICAL

Housing :	Impact Resistant Plastic
Dimensions :	230mm x 120mm x 110mm
Weight :	0.75kg including battery
Mounting :	Handheld & Tripod mounting

IRI 4010 INCLUDES

IR Camera, Battery, AC adaptor, USB Cable, user manual and software CD, carrying case, wrist strap, SD card and SD card reader.

OPTIONAL ACCESSORIES

Report writing software; desktop charger; 12V car charger; additional battery ; light shade.

INTERFACES

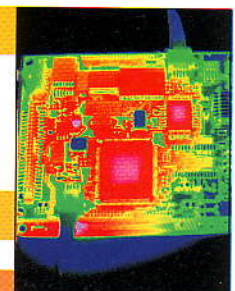
USB type B

SETTINGS AND CONTROLS

- ◆ On/Off soft power control
- ◆ User selectable span control
- ◆ User selectable level control
- ◆ Auto adjust span and level
- ◆ Display palettes : rainbow, ironbow, high contrast and greyscale
- ◆ Laser trigger switch
- ◆ Readout in °C or °F
- ◆ Image capture, time and date
- ◆ 2 x digital zoom

FEATURES

- ◆ Real time image and temperature measurement display
- ◆ Crisp high resolution images
- ◆ Large 3 ½ inch display
- ◆ Simple operation
- ◆ Multiple temperature measurement
- ◆ Multiple image storage and retrieval at full digital resolution
- ◆ Image browser with full image adjustment
- ◆ Battery Charge indicator
- ◆ Lightweight



Our Offices :

Nagpur	09329026944	Delhi	09312872090
Raipur	09300294398	Kolkatta	09332413330
Bangalore	09844061752	Hydrabad	09390919399
Bombay	09322676597	Jamshedpur	09431182353
Baroda	09327157887		