

IRI 1011

The Universal Thermal Imager
Really Affordable



Features

- Low Cost
- Temperature Measurement
- Multiple Image Storage
- One or Two Handed Operation
- Light Weight
- Uncooled
- Long Wavelength
- Simple Operation
- Voice Recording
- Laser Pointer
- Microsoft® Compatible
- 'Pocket PC' Compatible
- Remote Operation

Applications

- Predictive Maintenance
- Energy Conservation
- Process Monitoring
- Healthcare
- Research and Development



SPECIFICATION

PERFORMANCE

Temperature range:	Range 1 : -10°C to +150°C Range 2 : -10°C to +300°C
Field of view (FOV) :	20° x 20° (optional 10° x 10°)
Spectral Response :	8 to 14 micrometers
Sensitivity :	0.5°K @ 30°C (Range 1)
Displayed Image :	96 x 96 pixels
Detector :	16 x 16 pixel array
Frame rate :	8 Hz

IMAGE STORAGE

Up to 1000 images per MB of Memory.

LASER POINTER

A built in Class II laser is supplied to highlight the reference pixel.

IMAGER POWER SUPPLY

Battery :	4 x AA type removable batteries.
Operation time :	Up to 10 hours.
AC operation :	AC adaptor, 5 Volts DC out.

MECHANICAL

Housing :	Impact Resistant Plastic.
Dimensions :	120mm x 125mm x 80 mm.
Weight :	≤ 600g not including 'Pocket PC' and handle.
Mounting :	Handheld & Tripod mounting
Handle :	For supporting the Imager and 'Pocket PC' for one handed operation.

IRI 1011 INCLUDES

Imager, Imager/Pocket PC handle, lanyard, software for 'Pocket PC' & PC, 2m RS232 connection cable - imager to PC, user manual, AC power supply, carrying case.

SETTINGS AND CONTROLS : POCKET PC & PC

- User selectable sensitivity settings.
- User selectable offset control (range).
- Auto adjust sensitivity/range.
- Display palettes : ironbow, rainbow and greyscale.
- Pocket PC : two moveable temperature measurement cursors.
- PC : up to ten moveable temperature measurement cursors.
- User selectable emissivity values.
- User selectable image integration : 1 to 10 frames.
- Readout in °C, °F and K.
- Image snapshot.
- Image browser.
- Image label.

FEATURES - POCKET PC SOFTWARE

- Compatible with most Pocket PC devices running Microsoft Pocket PC 2000 & 2002.
- Multiple image storage and retrieval.
- Battery Charge indicator - Pocket PC.
- Pocket PC controlled by navigator button and touch sensitive screen controls.

FEATURES - PC SOFTWARE

- Real time image and temperature measurement display.
- Multiple image storage and retrieval.
- Time/Temperature display for up to ten user defined pixels.
- Save all (256) temperature values to microsoft Excel.
- Cut & Paste images into other Microsoft applications.

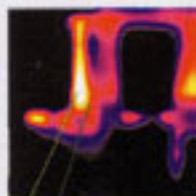
COMPUTER REQUIREMENTS

Pocket PC : Compaq iPAQ, Toshiba e740, Dell Axim X5, 02 XDA - contac TEMPESENS/IRISYS for alternatives.
RS 232 to Pocket PC communication cable or CompactFlash RS 232 adaptor where applicable.
PC : IBM compatible PC with a minimum of : 32 Mb RAM, 300 MHz processor, MS Windows (98, NT, ME, 2000 and XP), RS 232 serial port (115k Baud), 15 bit colour graphics capability.

Specifications are subject to change without notice

ENVIRONMENT

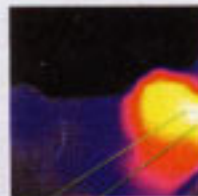
Temp. operating range :	-5°C to +50°C	Humidity :	10% to 90% non-condensing
Temp. storage range :	-20°C to +80°C	CE Mark (Europe) :	Complies with EMC directive



66.7°C



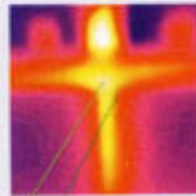
Electrical: Termination problem on yellow phase



50.5°C



Mechanical: Overheating bearing at pulley end



72.32°C



Energy: Leaking oven door seal

Temperature Sensor Technology